

GUEST GROUPS

We offer three lodging options year-round—from the rustic camp cabin to the premium hotel room experience.

CEDAR LODGE | PREMIUM

Our hotel-style Cedar Lodge has 22 rooms with private baths. Depending on the layout, each room can house between three to five people. Queen, double, twin, and bunk bed combinations are available. Bed & bath linens are provided. Groups with 21-31 participants may book one floor. Groups with 32 or more participants may book the entire Lodge. Capacity: 82



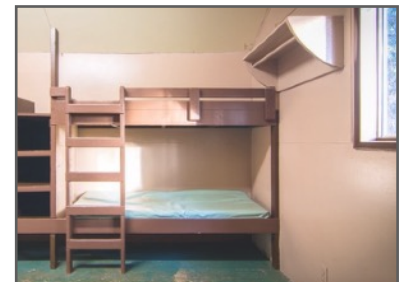
MOUNTAIN VIEW | CHARMING

Our Mountain View area has 10 traditional cabins. These cabins sleep eight campers each, in bunk beds. They can also be divided into two smaller suites for four. Each cabin is carpeted with two private bathrooms (one per suite). Two additional cabins also sleep eight but have open floor plans to provide accessibility for persons affected by disabilities. Mountain View guests provide their own bed & bath linens. Capacity: 96.



WESTVIEW | RUSTIC

Our Westview cabins provide the traditional camp experience. There are eleven cabins, each with four bunk beds (housing for eight). One cabin has an in-room bathroom. The other cabins share a centrally-located bathroom facility. Guests provide their own bed & bath linens. Capacity: 88



A WARM WELCOME IN ALL SEASONS

AMENITIES & PRACTICES

OUR MISSION

At Calvin Crest, we serve three specific populations. We host incorporated churches who align with Christian doctrine and practice, secular or Christian schools teaching about science and nature, and secular or Christian non-profit organizations working to bring wholeness to their communities.

DINING

Our kitchen staff is dedicated to providing great-tasting dishes of outstanding quality. Meals are served buffet-style in the Dining Hall. As multiple groups may be on site simultaneously, menus and meals times are decided by our Director of Food Services and may not be changed. We are able to accommodate most allergies and special diets.

CAMP STORE

Groups may request The Store be opened for half an hour during their event in order to purchase snacks, souvenirs, water bottles, t-shirts, and more.

ACTIVITIES

Calvin Crest has many free activities such as hiking trails, ping-pong and foosball, horseshoes, children's playground, playing fields, Gaga Ball, Nine-Square-in-the-Air, and sports courts. Fee-based activities include the Aerial Adventure Course, Climbing Wall, Zip Line, Swimming Pool, Paddle-Boats, Escape Room, Archery Tag, Crafts, Mountain Bikes, Guided Hikes, and more. Please see our Activities Guide or website for more information.



AVAILABILITY

Calvin Crest is open year-round. Please call our office at 559.772.4040 to inquire about dates and rates.

SCHEDULING YOUR RETREAT

A minimum of 21 participants (age 13+) is required to book one floor of Cedar Lodge. 32 or more participants are required to book both floors. 25 or more participants (age 13+) are required for all other lodging areas. Groups must fill one lodging area completely before a second area is opened for overflow. Minimum booking is two nights. Activities that require staffing are available for an additional fee. A signed contract and non-refundable deposit are required to reserve your requested date.

CANCELLATION

A non-refundable deposit is due with the signed contract, and the contract requires a guaranteed financial minimum. If the event is cancelled by the group at ninety days prior to the event or less, the group will be held responsible for the guaranteed minimum amount.

RATES

Per-person rates include lodging, meals, use of a meeting space, and some recreational activities. Below is a sample of our 2019 rates. Call about family retreat pricing, winter rates, quarterly specials, and more!

CEDAR LODGE | Two nights & five meals

Groups with 21-31 people = \$189 per person

Groups with 32+ people = \$180 per person

MOUNTAIN VIEW CABINS | Two nights & five meals

Groups with 25-50 people = \$160 per person

Groups with 51+ people = \$152 per person

WESTVIEW CABINS | Two nights & five meals

Groups with 25-50 people = \$132 per person

Groups with 51+ people = \$125 per person

ARRANGE A TOUR

We would love to show you around! To book a tour, please call and ask for Guest Group Reservations.

CONTACT

Phone: 559.772.4040 | Web: calvincrest.com

Email: lucinda@calvincrest.com | Videos and photos

can be seen on Instagram, SmugMug, and YouTube.

CALVIN CREST ACTIVITIES: TICKET TO RIDE

E-TICKET	RATE	MINIMUM BOOKING
ADVENTURE COURSE	\$25 PER PERSON	5 INDIVIDUALS
SWIMMING POOL	\$100 / HOUR	2 HOURS
D-TICKET	RATE	MINIMUM BOOKING
ARCHERY TAG	\$50 / HOUR	2 HOURS
BOATS	\$50 / HOUR	1 HOUR
BROOMBALL	\$50 / HOUR	1 HOUR
CLIMBING WALL	\$50 / HOUR	2 HOURS
ESCAPE ROOM*	\$50 / GROUP (4-6 people)	2 GROUPS
FLUME	\$50 / HOUR	1 HOUR
GIANT SWING	\$50 / HOUR	1 HOUR
MOUNTAIN BIKES**	\$10 PER BIKE PER HOUR	5 BIKES / 1 HOUR (Refundable deposit required)
SHERWOOD LOCH	\$50 / HOUR	1 HOUR
ZIP LINE	\$50 / HOUR	1 HOUR
C-TICKET	RATE	MINIMUM BOOKING
ARCHERY	\$25 / HOUR	1 HOUR
CRAFTS	\$25 / HOUR + supplies	1 HOUR
GUIDED HIKE	\$25 / HOUR	1 HOUR
B-TICKET		
GAGA BALL	FREE	RESERVE IN ADVANCE
HORSESHOES	FREE	RESERVE IN ADVANCE
NINE-SQUARE-IN-THE-AIR	FREE	RESERVE IN ADVANCE
A-TICKET		
FOOSBALL & PING-PONG	FREE	ENJOY ON YOUR OWN
HIKING TRAILS	FREE	ENJOY ON YOUR OWN
SPORTS COURTS	FREE	ENJOY ON YOUR OWN

ACTIVITIES MUST BE ARRANGED AT LEAST THREE WEEKS IN ADVANCE. SOME ACTIVITIES ARE WEATHER-DEPENDENT.

***ESCAPE ROOM:** Groups of 4-6 people have 30 minutes to escape the room. Allow 15 minutes between groups for the room to be reset.

****MOUNTAIN BIKES:** \$50 refundable deposit required. If six or more participants purchase a ticket, the refund will be returned. Mountain Bike rental requires an advance sign-up sheet, to be collected in advance by the Guest Group Leader.

GUEST GROUP FAQs

WHAT IS INCLUDED WITH OUR EVENT?

Your package includes lodging, meals, use of a meeting space, and some free activities. Throughout your retreat, a host is available to answer questions and assist as needed. Your meeting space will be set up according to your specifications and leaders are encouraged to arrive early to add any last minute touches. Your group is welcome to enjoy our hiking trails, sports courts, and playing field, and you may request a fire pit be set up so your group can enjoy a campfire.

WHO DECIDES THE MENU?

Multiple groups may be on-site simultaneously. Because of this, our Director of Food Services determines the menu and meal times. You are more than welcome to offer input as to your specific needs and request an advance copy of the menu. We can accommodate most special diets including vegetarian, kosher, gluten-free, and allergies.

WHAT ABOUT SNACKS?

Free coffee and tea are available in the Dining Hall from 7 AM to 8 PM daily. You are more than welcome to bring snacks and treats for your group. Groups with 150 or more guests may arrange for our Snack Shack to be opened and groups of any size can arrange for The Store to be open for thirty minutes. The Store sells drinks and snacks, as well as apparel and souvenirs.

WHAT ACTIVITIES DO YOU HAVE?

We have five levels of activities at Calvin Crest, ranging from free hiking trails and sports courts to our brand new, top-notch Aerial Adventure Course. You will receive our Activities Guide, which lists all available options and rates. Activities should be arranged with the office at least three weeks in advance.

ARE ACTIVITIES OPEN ALL YEAR?

Some activities are seasonal. For example, The Pool and The Flume (our 90-foot waterslide into the lake) are open from Memorial Day through Labor Day. In winter, the Adventure Course, Climbing Wall and Mountain Bikes may close if conditions are icy. Our staff is happy to work with you to customize activities your group will enjoy.

WILL WE BE SHARING SPACE WITH OTHER GROUPS?

We have guests on site nearly every day of the year so it is possible another group will be booked at Calvin Crest during your stay. Each group enjoys a private meeting space and lodging. Common area spaces such as our sports court and playing field are first-come-first-served but fee-based activities do not overlap. Groups with 250 or more guests may book exclusive use June through September, and groups with 150 or more may book exclusive use October through May.

WHAT IF WE HAVE A MEDICAL EMERGENCY?

Guest Groups should bring a participant with First Aid and CPR training who is able to handle minor medical emergencies. For critical needs, emergency vehicles are able to come to Calvin Crest. The near-by town of Oakhurst has three urgent care facilities, and two hospitals are within an hour's drive. Please note that Calvin Crest does not have a nurse on-site.

WHY IS A CONTRACT REQUIRED?

A booking agreement offers security for both parties. It ensures your reservation is set on our calendar—we will not cancel your event in order to book to another group. It also establishes that we will receive a certain level of income from your event as we may have turned away other business in order to host your group.

WHY ARE MINIMUM AND MAXIMUM PARTICIPANT NUMBERS NECESSARY?

A guaranteed minimum number of participants helps us know how many rooms or cabins to reserve for your event. Group leaders are asked to project a realistic estimate of expected campers and then the guaranteed minimum is set slightly below that estimate. On the rare occasion that a guest group has fewer guests than anticipated, the group is still responsible to pay for each reserved spot. On the flip side, sometimes groups have a better-than-expected response and exceed their established maximum. We consider this a great problem to have and do our best to find overflow housing whenever possible.

HOW DO I SIGN UP?

Simply call our office at 559.772.4040 and ask for Guest Group Reservations. We'll walk you through the rest!