

Everybody needs beauty as well as bread,  
places to play in and pray in,  
where nature may heal and give strength  
to the body and soul.  
~John Muir



*Witnessing to the Love of Jesus Christ*

Our mission is to make disciples  
of Jesus Christ, practice hospitality,  
invite guests to experience and know  
God's creation, and partner with  
peacemakers to bring forth health  
and wholeness in their communities.

## LODGING FOR ALL SEASONS

Thank you for considering Calvin Crest as the location of your retreat. We offer three levels of housing accommodations year-round, from the rustic camp cabin to the deluxe hotel room experience.



### CEDAR LODGE

Our hotel-style Cedar Lodge has 22 rooms with private baths. Depending on the layout, each room can house between three to five people. Queen, double, twin, and bunk-bed combinations are available. Bed & bath linens are provided. Groups with 21-31 participants may book one floor. Groups with 32 or more participants may book the entire Lodge. Capacity: 82

### DELUXE



*Cedar Lodge in summer*



*Comfortable sleeping arrangements*

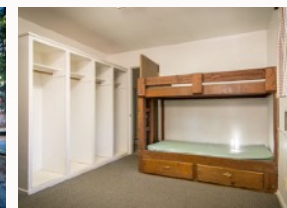
### MOUNTAIN VIEW CABINS

Our Mountain View area has 22 carpeted cabin-suites. Each suite has two bunk beds and a private bath. Doors between the suites can be opened to allow eight people to room together. Our newest cabin is accessible for persons with disabilities and has two suites, each with four bunkbeds (sleeps eight). Guests in Mountain View cabins provide their own bed & bath linens. Capacity: 96.

### PREMIUM



*Mountain View cabin*



*Roomy interior with closet space and a private bath*

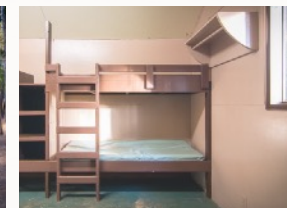
### WESTVIEW CABINS

Our Westview housing area provides the traditional camp experience. There are eleven cabins, each with four bunkbeds (housing for eight). One cabin has an in-room bathroom. The other cabins share a centrally-located bathroom facility. Guests provide their own bed & bath linens. Capacity: 88

### RUSTIC



*Westview cabin*



*Cabin interior*

# SUMMER-SEASON LODGING

From May through September, we offer two additional lodging options for your retreat:

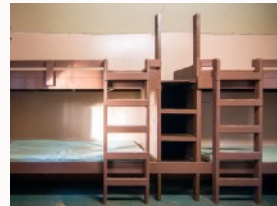
## EASTVIEW CABINS

## RUSTIC

The summer compliment to our Westview cabins, Eastview also offers a traditional rustic camp environment. There are seven cabins, each with four bunkbeds (housing for eight). Cabins share a centrally-located bathroom facility. Guests provide their own bed & bath linens. Capacity: 56



Eastview cabin



Cabin interior

## SHERWOOD FOREST

## SECLUDED

Sherwood Forest is tucked away from the rest of camp, and has a Robin Hood theme. Imagination comes to life with a Castle backdrop for dramas, a Loche, a Green for games, an Outdoor Amphitheater surrounded by Giant Sequoias and more. Twenty huts house eight each and are organized into six hamlets. Each hamlet has a campfire for cooking and a shared bathroom facility. Capacity: 160



Sherwood Forest, where imagination comes to life



*We need to find God, and He cannot be found in the noise and restlessness. God is the friend of silence. See how nature—trees, flowers, grass—grows in silence; see the stars, the moon, and the sun, how they move in silence... We need silence to be able to touch souls. ~Mother Theresa*

## INDOOR MEETING SPACES

- Cedar Lodge Fireside Room, capacity: 62
- Mountain View Lounge, capacity: 100
- Dining Hall as a meeting space, capacity: 220
- Hillhouse, capacity: 25
- Cedar Lodge Reading Room, capacity: 12

## OUTDOOR MEETING SPACES

- Crestview Amphitheater, capacity: 120
- Vespers by the Lake, capacity: 150
- Pavillion, capacity: 200

TRANQUIL

PLAYFUL

PEACEFUL

INSPIRATIONAL

LOVING

RELATIONAL

MISSIONAL

RESTFUL

WHOLESOME

HOME

---

# AMENITIES & PRACTICES

---

## DINING

Meals are served buffet-style in the Dining Hall. Each meal is prepared with love by kitchen staff dedicated to providing great-tasting dishes of outstanding quality. Guests are always welcome to go back for seconds! Meal times are assigned by Calvin Crest Conferences due to multiple groups on site at the same time.

## CAMP STORE

Gift items, T-shirts, sweatshirts, souvenirs, toiletries, snacks, and beverages may be purchased in the Store, located behind the Dining Hall. Groups with 25 or more participants may request the store.

## ACTIVITIES

Calvin Crest has free activities such as hikes, sports courts, ping-pong, foosball, Gaga Ball, and more. Fee-based activities include the Pool, The Flume (our 90-ft waterslide into The Lake), Climbing Wall, Paddle-Boats, Broomball, Archery Tag, an Escape Room, and more. These activities can be arranged through the registration office. Some activities are seasonal.

## CHECK-IN & CHECK-OUT

Check-in and check-out times are specified on your contract. Individuals in a group will not be allowed to check-in until after the group leader arrives. A designated group leader may check in participants after checking in with the registration office.

## RETREAT COMMUNICATION

Group leaders are provided with a two-way radio for contacting Calvin Crest staff during their event, should any needs or concerns arise.

## PARKING

The main parking lot is centrally located and serves Crestview, the upper portion of Calvin Crest. Cedar Lodge, Mountain View, and Sherwood Forest have their own parking areas.

## LOST AND FOUND

Found items can be given to the Calvin Crest staff Host. Lost items are held for two weeks and will be returned at the owner's request and their payment for shipping.

## AVAILABILITY

Calvin Crest is available to guest groups throughout the year. Please call the registration department at 559.683.4450 to inquire regarding available dates. A signed contract and non-refundable deposit are required to reserve your requested date.

## CANCELLATION POLICY

A non-refundable deposit is due with the signed contract. An installment payment of twenty percent is due three months prior to your event. If the event is cancelled by the group at ninety days prior to the event or less, the group will be held responsible for the guaranteed minimum amount. If Calvin Crest successfully re-books the dates to another group, the guaranteed minimum amount—minus the non-refundable deposit—will be refunded.

## RETURNING GUESTS

A guest group is given priority for thirty days after the conclusion of their event to book a similar event on the same dates the following year. If not renewed within this time period, the dates become available to other groups. Calvin Crest reserves the right to deny renewal.

# PRICING GUIDE

## CEDAR LODGE

### Two Nights & Five Meals

- Groups with 21-31 people = \$189 per person
- Groups with 32+ people = \$180 per person

### Three Nights & Eight Meals

- Groups with 21-31 people = \$247 per person
- Groups with 32+ people = \$235 per person

### Four Nights & Eleven Meals

- Groups with 21-31 people = \$378 per person
- Groups with 32+ people = \$359 per person

### Five Nights & Fourteen Meals

- Groups with 21-31 people = \$436 per person
- Groups with 32+ people = \$414 per person

### Six Nights & Seventeen Meals

- Groups with 21-31 people = \$494 per person
- Groups with 32+ people = \$469 per person

## MOUNTAIN VIEW

### Two Nights & Five Meals

- Groups with 25-50 people = \$160 per person
- Groups with 51+ people = \$152 per person

### Three Nights & Eight Meals

- Groups with 25-50 people = \$214 per person
- Groups with 51+ people = \$203 per person

### Four Nights & Eleven Meals

- Groups with 25-50 people = \$320 per person
- Groups with 51+ people = \$304 per person

### Five Nights & Fourteen Meals

- Groups with 25-50 people = \$374 per person
- Groups with 51+ people = \$355 per person

### Six Nights & Seventeen Meals

- Groups with 25-50 people = \$428 per person
- Groups with 51+ people = \$407 per person

## WESTVIEW / EASTVIEW

### Two Nights & Five Meals

- Groups with 25-50 people = \$132 per person
- Groups with 51+ people = \$125 per person

### Three Nights & Eight Meals

- Groups with 25-50 people = \$182 per person
- Groups with 51+ people = \$173 per person

### Four Nights & Eleven Meals

- Groups with 25-50 people = \$264 per person
- Groups with 51+ people = \$251 per person

### Five Nights & Fourteen Meals

- Groups with 25-50 people = \$314 per person
- Groups with 51+ people = \$298 per person

### Six Nights & Seventeen Meals

- Groups with 25-50 people = \$362 per person
- Groups with 51+ people = \$346 per person

# PRICING GUIDE & POLICIES

## SHERWOOD FOREST

### Two Nights & Five Meals

- Groups with 25-50 people = \$120 per person
- Groups with 51+ people = \$114 per person

### Three Nights & Eight Meals

- Groups with 25-50 people = \$165 per person
- Groups with 51+ people = \$157 per person

### Four Nights & Eleven Meals

- Groups with 25-50 people = \$240 per person
- Groups with 51+ people = \$228 per person

### Five Nights & Fourteen Meals

- Groups with 25-50 people = \$285 per person
- Groups with 51+ people = \$271 per person

### Six Nights & Seventeen Meals

- Groups with 25-50 people = \$330 per person
- Groups with 51+ people = \$314 per person

## FAMILY RETREAT PRICING

Child rates while staying in room with parent:

- Age 0-03, free
- Age 04-12, half price
- Age 13+, full price

Children age twelve and under do not count towards the guaranteed minimum number of participants in the contract.

## BOOKING POLICIES

A minimum of 21 participants (age 13+) is required for booking one floor of Cedar Lodge. A minimum of 32 participants is required for booking both floors.

A minimum of 25 participants (age 13+) is required for all other lodging areas.

Rates are per person for two or more per room or cabin.

Minimum booking is two nights. Holiday weekend minimum booking is three nights.

Rates include lodging, meals, use of a meeting space, and some recreational activities. Activities that require staffing are available for an additional fee.

## ARRANGE A TOUR

We would love to show you around! To book a tour, please call our office at least 48 hours in advance.

## CONTACT

45800 Calvin Crest Rd, Oakhurst CA 93644  
Phone: 559.683.4450  
Email: [info@calvincrest.com](mailto:info@calvincrest.com)  
Web: [calvincrest.com](http://calvincrest.com)

*Look deep into nature, and then you will understand everything better.*

*- Albert Einstein*

